

MPQG BOTM

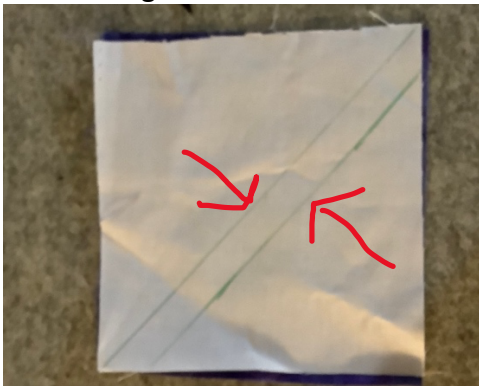
February 2022

Disappearing Shoo Fly



Use two or three contrasting fabrics

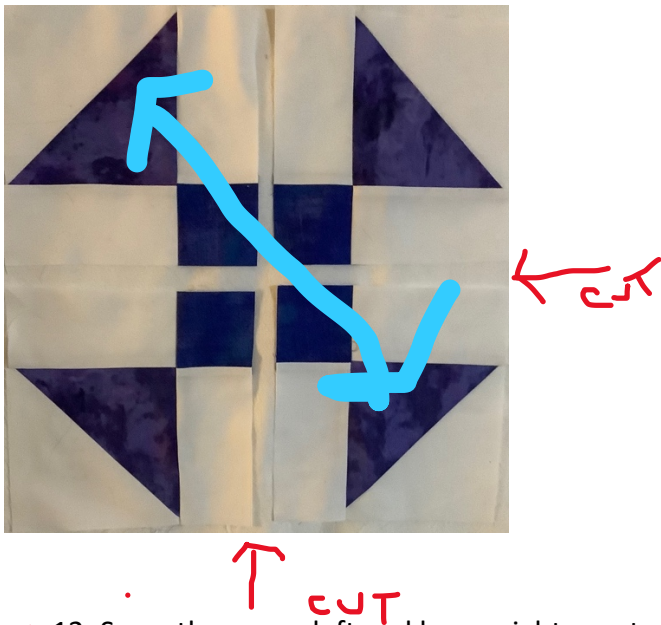
1. Cut 4 $4\frac{3}{4}$ " squares from your light fabric; Cut 4 squares $4\frac{3}{4}$ " x $4\frac{3}{4}$ " and 1 square $4\frac{1}{2}$ x $4\frac{1}{2}$ " from your dark fabric
2. Match the dark squares with the $4\frac{3}{4}$ " light squares
3. Draw a diagonal line across each of the matched sets, corner to corner.



4. Draw another line $\frac{1}{2}$ " away from the first line.
5. Sew along both lines.
6. Cut between the two sewn lines. Set aside the smaller $\frac{1}{2}$ square triangles.
7. Press the 4 larger $\frac{1}{2}$ square triangles open.
8. Line up the squares into a 9-patch with a dark square in the center and $\frac{1}{2}$ squares in the corners (dark fabric touching the center square). Place the remaining light squares in the N, S, E, W positions.
9. Sew the rows together. Press the top and bottom rows toward the center and the middle row outward.
10. Sew the rows into the 9-patch. Press



11. Cut the resulting square in equal quarters, with a top to bottom and a left to right cuts.



- 12. Swap the upper left and lower right quarters.

13. Sew the quarters together. Press and trim to 12"

