



Pines & Needles

Monterey Peninsula Quilters Guild

February 2014

General Meeting

Monday, February 3, 2014

Set-up: 6:00 p.m.
Refreshments: 6:30 p.m.
Meeting: 7:00 p.m.

Pacific Grove Community Center
515 Junipero Avenue (at 15th Street)
Pacific Grove, CA 93950

What to Bring

- Check or cash for workshops, raffle tickets
- Name tag
- Community quilts
- Library books
- UFOs
- Sweets & savories
- Pen and calendar to volunteer

Upcoming MPQG Events

February 3 - Monday - Meeting
Thom Adkins
My Quilts - Start to Finish

February 26 - Wednesday - Meeting
Susan Carlson
Cutting Loose

March 31 - Monday - Meeting
Diana McClun & Laura Nownes

April 30 - Wednesday - Meeting
Jo Diggs
Multi-Layered Applique

Advertiser Index

Back Porch Fabrics, Pacific Grove, p. 12
Bella's Studio, Monterey, p. 12
Empty Spools Seminars, p. 12

Professional Quilters

Get It Quilted! By Sharon Winter, Monterey, p. 12
Holly Casey Quilts, King City, p. 3



Next Meeting

MONDAY, FEBRUARY 3

THOM ATKINS

My Quilts - Start to Finish

Admit it! We love shiny things. For quilters, all that glitters is not gold but often beads.



In February, we will indulge our love of beads by welcoming Thom Atkins from Santa Cruz, California.

Some of you may know his work from the January/ February 2013 show at Back Porch Fabrics. At that show, he displayed a breathtaking selection of beaded quilts. Atkins has taken beaded textiles to the ultimate degree, making the beads a sculptural element and dominant force in his work.



Thom is a talented artist of extensive training in the areas of painting, medical illustration, stained glass, and sculpting. His love of beads started long ago but didn't come to the forefront until after a car accident in 2002 damaged his wrists and thumbs. In time, surgery repaired the damage but an artistic shift to textiles and beading had occurred. He now admits that beads are so much easier to carry around compared to his previously favored art form of bronze sculpting. In 2012, Thom authored *Beading Artistry For Quilts*. Learn more about Thom at www.thomatkins.com.

Margaret Nava, Programs
Navamtry@aol.com, 831-372-6282

FEBRUARY 3RD IS NEARLY HERE!

February 3rd is important, because it is the DEADLINE for entering your marvelous quilts in the upcoming Quilt Show. It's simple!

1. Get the entry form from the web site or newsletter! Or pick one up at the next meeting.
2. If you want your quilt judged, also fill out the judging form and enclose \$7.00 for each quilt you want to be judged.
3. Take a color picture of your quilt. The top needs to be done in the picture, but you may still need to bind and quilt.
4. Attach the 4X6 glossy picture to the entry form.
5. Directions for submitting are on the form. Contact names and their information are on each form.
6. If you have questions, CALL THE CONTACT PERSON LISTED ON EACH FORM. They are happy to answer any questions you have.

Happy quilting! We know the show will be spectacular!

Next Workshop, MARCH 1 & 2, SUSAN CARLSON Cutting Loose

Don't miss this unique opportunity to experience Cutting Loose with Susan Carlson. Join Susan as she shares her evolving technique for the construction of art quilts using a collage technique.

Emphasis will be placed on the collage piecing process. Patterns or templates will not be used. Instead, students will sketch their design onto a foundation fabric and fill in the design with fabrics of their choice. This encourages playfulness, serendipity and a willingness to "cut loose." Due to time constraints, students need to choose simple, whimsical designs such as fish, butterflies or other bugs. If needed, designs will be available from Susan for a small fee.

To register, call Gail Abeloe at 831-375-4453 or go to [Workshop Reservation](#) form.

Doors open at 9:30 a.m.



Charity Work

Charity Quilt Guidelines

The Guild has enjoyed a surge in new members this past year and many of you have jumped right into the fun of our charity work. Therefore it is probably time to spell out some guidelines. You can always refer to our web site as a reminder at www.mpqg.org/activities/community_outreach/.

Sizes:

Neonatal 20" X 24"; Dialysis 42" X 60"; CASA teen 42" X 60"; and CASA children 40" X 50". These are just guidelines, other sizes are welcomed in any category, for instance, dialysis patients often need larger quilts.

Fabrics and batting:

Quilting cotton and flannel work well. Anything that can be laundered. The hospitals are not able to launder minky fabric and cannot accept quilts backed with it. If a quilt has two layers of flannel, front and back, there is no need for a bat. For the neonatal quilts that have two layers of cotton, a very light batting is acceptable with minimal machine quilting. This is for flexibility. Wool batting, although warm, needs special handling and is not encouraged. Batting is available through the Guild and can be requested by phoning the Chairperson for Charity Quilts.

Machine quilted or tied, it's your choice. One note on knots: don't pull them so tight that the block gets puckered.

To wash or not to wash, that is the question: It is not necessary. None of our recipients has ever requested this. In the case of the hospitals, they wash the neonatal quilts before using them with the babies anyway, so it is not necessary for us to wash the quilts. If you have used good, new, or at least fresh, fabric you can give your quilts away with a clear conscience.

The Charity Quilt table at the Guild meetings has a display of kits to sign out. There are: Neonatal kits in flannel; Finishing kits, usually with batting, that can be tied or machine quilted; and Design-It-Yourself Kits of coordinating fabrics for you to be creative.

Thanks for your support!

Terann Carr, Community Liaison
cacarrs@sbcglobal.net, 831-375-7881

Thanks To Our Professional Quilters

I would like to thank Sharon Winter and Holly Casey for their service to the MPQG and to our Charity Quilts program. Sharon receives quilt tops directly from our members for the Guild's charity work, and they get handed in without much fanfare. The same goes for Holly. She usually picks up a finishing kit or two at the meetings she attends. Let's thank them by directing business their way!

Terann Carr, Community Liaison
cacarrs@sbcglobal.net, 831-375-7881



Quilts to Benefit ALS Research

Right: Lorri Coppola carries the Olympic Torch. Photo: Chris Nishimura.

The Hopes & Dreams Quilt Challenge for ALS is seeking quilt donations to give to very ill, often isolated, ALS patients – letting them know there are people who sincerely care. Select quilts will be sold with 100% of the proceeds going to ALS Research.

Quilters Dream needs your help!

Work with your fellow quilters to make and donate quilts to the Hopes & Dreams Quilt Challenge for ALS on behalf of MPQG. The quilt guild that donates the most quilts will receive \$500 worth of Quilters Dream Batting and other great items totaling \$1,000 in prizes for your guild!

Each individual who donates a quilt on behalf of our quilt guild is also eligible to win great prizes!

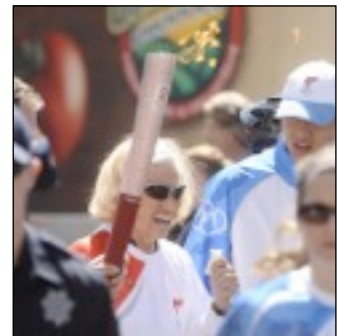
Deadline: Quilts must be received by July 31, 2014.

What is ALS? It's known as Lou Gehrig's Disease. Every 90 minutes an American is diagnosed with ALS. Every 90 minutes an American dies of ALS. American Veterans are 66% more likely to get ALS. Young people are also being diagnosed with ALS. ALS patients maintain full intelligence while the disease robs them of the ability to move, speak, eat, swallow and breathe. Complete paralysis (referred to as a 'glass coffin') and death is usually within 6 months to 5 years. There is NO treatment or cure. ALS patients and researchers need your help. Please join by donating your quilt(s) today to warm the hearts and laps of ALS patients and raise awareness and research money for ALS. To learn more about ALS, go to www.alsa.org.

For Entry Forms, Rules, and Prize Categories please visit: www.QuiltersDreamBatting.com or call toll free to 1-888-268-8664.

Please send quilts with entry forms by July 31, 2014 to:
HOPES & DREAMS
c/o Quilters Dream Batting
589 Central Drive
Virginia Beach, VA 23454

A very special THANK YOU to Hopes & Dreams Grand Prize Sponsors: Dragon Threads, Forever in Stitches, hang it dang it, J.N. Harper Co., Judy Martin Books, Minick and Simpson, Mistyfuse, Quilters Gift Shop, Quilter's World, Straight Stitch Society, The Warm Company, The Wooden Bear, and more!



Meet Terann Carr

Terann grew up in Minnetonka, Minnesota. She attended college in New York and Wisconsin, earning a BS in Art Education.

She always loved to sew and did a lot for her dolls and herself, many of the designs, her own creation. When her parents were to celebrate their 50th Wedding Anniversary, she thought it would be nice to make a special quilt similar to ones she had seen others make for the occasion. A neighbor coached her through it and she has been quilting ever since.

Terann and Les will celebrate their 30th anniversary this April. They have two grown children; Jeremy and Hilary, who just married Aaron a year ago.

Career wise, Terann worked as a costume designer for Lamb's Players Theatre in San Diego for nine years, then met and married Les. She did social work and retail in Minnesota before moving to California.

Les' career brought them to Monterey in 1985 when Les was in school at NPS for four years. They served in Guam for two years and came back to NPS where Les has taught in both the Meteorology and Math Departments. "This is not your typical military career", she says.

Terann enjoys hand quilting, but lately has been doing more machine quilting to "get things done". She also finds that tying quilts is a fun project. "As for my passion," Terann says, "it's to get others to join me in the fun of encouraging others with quilting."

She joined the guild around 2006 and has served on the Board of Community Liaison and for the Quilt Show. She has helped with the Silent Auction and the Garage Sale. For the last few years, she has promoted participation in the Monterey County Fair.

When Terann is not quilting, her time is spent in church related activities like women's Bible studies and music. She also enjoys teaching sewing and quilting.



Guild News

Library Requests ??

The Guild library will be purchasing a few new books during the coming year. Please let me know (by email) about books or videos that you have seen that would be of interest to Guild members.

Also, if you have a Guild library book at home, please remember to bring it to the next meeting.

Thank you,
Jane Firth,
jnf99@yahoo.com

Mini Quilt Raffle

Donation Quilts for the Mini Quilt raffle are due to Tina Magill by the March 31st regular meeting, **but I would appreciate having them by the middle of March.**

No forms to fill out, label if you want, hanging device if you want, any kind of 'quilt' technique, any size (but try to keep it smaller than 30 x30...)

Call or email if you have any questions....

Tina Magill [831-649-1987](tel:831-649-1987) or cell [510-206-8477](tel:510-206-8477)
or magill1242@gmail.com

Play Time in the Studio

It was SRO for guest speaker Freddy Moran. What a great way to start the year. And, so many good Freddyisms to quote in the coming years.

Her comments about her toddler grandchildren playing in her sewing room especially resonated with me. Sewing rooms can be a place of many dangers yet numerous fascinations to toddlers and young children. But with a quick clean up to remove sharp scissors and rotary cutters, your little group can enjoy such a satisfying time together. Freddy has taken creativity one stop further than I have with the introduction of glue stick "sewing."



Desperate to get a little sewing done during long days of babysitting our oldest grandchild, I introduced her to what we call Pin Work when she was 18 months old. I sat her on the floor with a solid color sofa pillow and three long, colorfully-headed pins. (Yes! I can hear many of you gasping at the thought of giving an 18 month old a pin.) They can spend quite a lot of time endlessly rearranging the pins. When they bore of just three pins, three or four more can be added to the mix. They help me count out the pins. When 20 pins no longer holds any fascination, I bring out my magnetic pin picker-upper and that keeps them busy for another 20 minutes. Of course, the trick here is to keep track of the pins. So, we methodically count them as they put them back into the pin cushion.

Then, it's off to the scrap bin to sew fabric scraps together with a larger needle and well tied and knotted thread.

In the photo above, Julia our youngest grandchild is sewing a pillowcase. I sew up to the pin and her job is to remove the pin and put it in the pin cushion. She absolutely never tires of this play time.

In the interest of time, I won't regale you with my many sewing escapades. However, since hearing Freddy's program on glueing fabric, I'll add that to our play time the next time the little tyke visits. I confess, it does sound a little messy so I may corral her at the kitchen table. We have a new grandchild due in May and perhaps it's time to add a few new tricks to my act.

What do you do in the sewing room with the youngsters in your life? Share your tips with me and I'll pass them along in another column.

Claudia Sammis
especials@sbcglobal.net, 831-333-9133

100 Quilts Needed for Pfeiffer Ridge Fire Victims

Quilts Still Needed, Deadline: Monday, February 3 at the Meeting would be great.

On December 16th about midnight, the Pfeiffer Ridge Fire began its march to consume 34 homes in the Big Sur area. One hundred neighbors, mostly adults, were left homeless at the end of it all.

Quilters and Big Sur residents, Nadine Clark and Eby Wold are collecting large lap quilts all the way up in size to king bed quilts to replace the bedding lost in the fire. Eby and Nadine are working through Coast Property Owners Association (CPOA). To donate cash or other necessities, go to <http://bigsurfire2013.org/>.

Brrrrr!! It's cold on these winter nights! Can you help by donating an adult-size quilt from your inventory? Or, how about finishing up a quilt top that's been languishing in your studio? Until February 3, quilts can be dropped off at Back Porch Fabrics in Pacific Grove, CA, or brought to the February 3 MPQG meeting.

Note: No children's quilts are needed.

Membership

New members are always welcome.

Membership in our guild has many advantages: professional guest speakers at monthly meetings; workshops; quilting bees; annual quilt show; and much more. By supporting your local guild, you enable MPQG to produce excellent quilting resources to share with all members.

MPQG is an all-volunteer organization where you will meet creative people and expand your circle of friends. As with all organizations, MPQG depends on its members to help in all aspects of the activities. From assisting with our annual Quilt Show to writing articles for the web site, our volunteers are an invaluable resource. If you are able to volunteer a few hours a month, please let us know. And, thanks in advance for your help.

The annual membership year is from September 1 to August 31. New memberships and renewals are \$35.00. Dues must be received by September 30th to be in the current Member Directory published each Fall. All information collected on the membership application will be kept strictly confidential and will not be sold.

Chris Raarup: Judging Notes

Chris Raarup's quilt was entered into judging in the 2013 MPQG Quilt Show. The judge, Jody Ohrt, gave her the following critique.

- Color placement emphasizes color design.
- Innovative shift from traditional color scheme.
- All straight pieces should be straight.
- Quilt lies flat.
- Pebble quilting is very effective.
- Quilting thread tension needs slight adjustment.
- Binding should be equal width around quilt.
- Corners should be 90 degrees.
- Binding should be full.
- Addition of silk adds sheen and visual appeal.



Chris's Comments:

I know for a fact that I would not have won a ribbon if I had had my quilt quilted by a professional, because there were so many other worthy entries in that category. I knew if I did ALL the work myself, that would have put it into a different category. I was hoping fewer people would have entered that category, and thus increase my chances of placing. I took a gamble and won.

Another thing I would like to say to the members is- don't be afraid of quilting your own quilt! I took the class at "The Last Stitch" in San Juan Bautista, and scheduled a time when I could rent the machine and devote an entire day, if needed, to quilt it all in one shot. At first I was afraid to start. I had an idea of what to do, but nothing concrete was in my mind. I realized that you can't be afraid of making mistakes, because then you will stiffen up and the arm won't "flow". You need to relax and just keep going at a steady pace, or you will make a mistake. The mistakes will be apparent in jagged lines, lines that don't flow, and that sort of thing. That's not to say there are no mistakes in the quilting- there are plenty. But I am not ashamed of them, because that's how you learn. You have to put in your fair share of mistakes to get to the good stuff. Another thing- it is super fun to quilt it yourself!

Thank you, Chris!

Last Call for Raffle Quilt Designer 2015

The MPQG Board of Directors is soliciting design bids for the 2015 raffle quilt to be used for guild fund raising purposes. Here are the details:

Proposal Deadline: February 15

Size: Queen size bed quilt

Considerations: Design should have broad appeal to encourage ticket sales. Designer will write directions and distribute patterns at guild meeting. Squares/components to be made by guild members and assembled by Designer.

Budget: Monterey Peninsula Quilt Guild funds this project. Designer is responsible for the entire production of the quilt.

Completion Date: Quilt should be finished and ready for photography by June 1, 2014.

Winning ticket: Drawing will be held on the Sunday afternoon of the 2015 MPQG quilt show.

Please contact me if you're planning to submit a design for 2015 and we can go into the details further.

Do you have a great idea, but need a little extra time to get your design proposal together? The Board will accept design proposals for the 2016 quilt beginning March 1, 2014.

The Board looks forward to seeing your gorgeous design!

Claudia Sammis, President
especials@sbcglobal.net, 831-333-9133

Here is a thank you note from a
guild member, Corliss Kelly

December 8, 2013

Dear Ladies,

Thank you so much for the generous gift you made to the Village Project After School Tutoring program. I have been helping with enrichment and reward incentives for students who are improving in their academy classes, as shown by their grades and teacher's reports. Many of them are interested in learning to sew and make a quilt to keep. We have already completed one group project and are now ready to attempt more. With the purchase of a Brother sewing machine and an older donated machine, we should be able to get some memories made as well as quilts.

Thank you on behalf of the 31 students in our program.

Sincerely,
Corliss Kelly
MPQG Guild member

The Guild Library

Our Library has a wonderful variety of quilt-related books which may be checked out for a period of one month. The fine for an overdue book is \$1.00 per month.

A current list of books is available at the library from 6:30 to 7:00 p.m. before the General Meeting or at the link below.

[Library Book List \(PDF\)](#)

Seeking White Glove Ambassador Help

Forty White Glove Ambassador Volunteers are needed for the Quilt Show.

Shifts are a short –1 hour and 45 minutes.

Greet old friends and meet some new friends. Take the opportunity to show visitors around the show while talking to them about the quilts, quilting and our Guild and **Protect our quilts** by using white gloves to turn the quilts for visitor's viewing.

It's all very easy and it's fun.

Please sign up at the next Guild meeting or contact me.

Marjorie Longo, White Glove Chairman
(831)624-8649 frumml@aol.com

Submissions for Web Site and Pines & Needles

Contributions welcomed at any time of the month! Photographs should be 300 ppi, .jpg or .tif format. Please do not add ANY formatting to articles. Submissions should be copyright free.

The new web site is now live at our old web address at www.mpqg.org.

Alexandra Burke, Webmistress
alex@alexandraberg.com
or 831-406-0442

Attention Crayon Challenge Participants



The Quilt Show committee has a new requirement for the Challenge quilts this year. They must be entered just like any quilt to the show.

Please fill out an entry form and turn it in by the February 3 deadline. They will not be eligible for Judging, but they will be included in the Quilt Show Viewers Choice Awards. There will not be a separate Viewers Choice for the Challenge Quilts.

Lets all give a warm welcome to our new members of the guild!

New Members:

Johanne Karvelson from Canada

Barbara Grant from PG

Jana Brinsmead from Carmel

Robbin MacRae from Carmel

Preview # _____

Category Number if quilt is to be judged _____

2014 Entry Form

MONTEREY PENINSULA QUILTERS GUILD QUILT SHOW

April 5 & 6, 2014

Entry Requirements:

- This entry must not have been displayed at a previous MPQG quilt show.
- Please enter as soon as possible. **The deadline to return entry forms and pay judging fee is Feb 3, 2014.**
- **Each entry form must be accompanied by a 4X6 photo of the quilt printed on glossy paper.**
- Mail the forms to: **Colleen Johnson, 1580 La Honda Ct, Seaside CA 93955 before the deadline or give them to Colleen at a quilt guild meeting.**
- If you have questions about the forms, call Colleen at 831-594-5291 (day) or 831-920-1797 (night)
- No more than 5 quilts per member can be entered in the show (including challenge quilts).
- The Quilt Show Committee will send a letter of acceptance and instructions once all of the entries have been processed.

Fill out a separate form for each entry.

Name: _____ *Junior under 16 _____

Street: _____ City: _____ Zip: _____

Phone: (H) _____ (W) _____ Email: _____

Title of Entry: _____

Maker: _____ Owner: _____

Quilted by: _____

Design Source (be specific): _____ Year Completed _____

Story (any comment of interest to visitors in 75 words or less).

Is this entry to be judged? ___ YES ___ NO If YES, complete Judging Form.

Is this entry a 2013 MPQG Crayon Challenge Quilt? ___ YES ___ NO

Is this entry for sale? ___ YES ___ NO If YES, enter sale price \$ _____

Quilt Size (in inches): Height _____ Width _____

Signature _____

**Junior under 16 does not need to be a member of the guild.
Note: Although every protection is taken to safeguard your entry, MPQG does not provide property insurance.
Please make sure your entry is covered under your homeowners insurance.*

Preview # _____ Category Number: _____ Fee Paid: Cash / Check

MPQG Judging Application 2014

Name: _____ Signature _____ Tel. _____

Title of Entry: _____

Information: Helen Egerton (831) 649-1680 or email: hmegerton@gmail.com

Entry Requirements:

- Each member may enter a total of 3 items to be judged.
- Entries made from a kit (pattern and fabric packaged together) will not be judged.
- All entries must have been completed within the past three years.
- Maker of entry must be a member of the MPQG as of Feb 1, 2014
- Quilt entries must have 3 layers and be hand quilted or machine quilted or tied.
- Entry must not have been displayed in a MPQG Quilt Show in the past.
- MPQG 2013 Crayon Challenge quilts are not eligible for judging.
- Entry fee of \$7.00 per quilt must accompany entry.
- Entry fee of \$10.00 per quilt must accompany professional entries.

Please List Specific Design Source:

Original _____ Book/Pattern _____
Class/Workshop _____ Other _____

Please Check One Category Only:

Large Quilts – Total perimeter: 220 inches OR MORE

1. _____ Traditional (pieced or appliquéd) hand quilted
2. _____ Traditional (pieced or appliquéd) machine quilted
3. _____ “Top by One, Quilted by Another” (note: name of quilter must be on entry form)

Small Quilts – Total perimeter: 219 inches OR LESS

4. _____ Traditional (pieced or appliquéd) hand quilted
5. _____ Traditional (pieced or appliquéd) machine quilted
6. _____ “Top by One, Quilted by Another” (note: name of quilter must be on entry form)

Mixed Techniques

7. _____ Mixed techniques (e.g. appliquéd and pieced, both hand and machine quilted or tied)

Group Quilts (all sizes)

8. _____ Group Quilt (Top completed by 2 or more quilters)

Innovative Quilts (all sizes)

9. _____ Adapted from a traditional design or nontraditional pattern. See note below.

Art Quilts – Completely original design meant to be hung as a work of art

10. _____ Small – Total perimeter 159 inches or less
11. _____ Large – Total perimeter 160 inches or more

Professional Quilts *Professional is defined as someone who has taught quilting for a fee, published books on quilting, or made more than \$1000 a year from their quilting through designing, stitching, prize money winnings or been a quilt show judge.

12. _____ Traditional designs
13. _____ Innovative designs
14. _____ Art Quilts

Notes:

- Traditional:** Based on a traditional design
Innovative: Adapted from a traditional design but must be significantly altered by innovative use of design, fabric, color, etc.
Ribbons: Ribbons **MAY** be awarded at the discretion of the judges.
Honorable Mention - awarded at the discretion of the judges
Best of Show Nonprofessional – 1 ribbon Best of Show Professional – 1 ribbon
Judges Choice - 1 ribbon per judge

bella's
STUDIO
Monterey's sewing, craft & design studio; where inspiration and creativity are set free.

CLASSES, WORKSHOPS, & SPECIAL EVENTS

BELLA LOFASO BRANCATO
140 West Franklin St., Suite 205, Monterey, CA 93940
www.bellastudiomonterey.com,
bella@bellastudiomonterey.com, 831.920.2272

Back Porch Fabrics
Fabulous Fabrics, Books & Quilting Tools

Gail E. Abeloe

(831) 375-4453 Gail@backporchfabrics.com
(831) 375-3755 fax www.backporchfabrics.com
157 Grand Avenue at Central, Pacific Grove, CA 93950

Get It Quilted!
By Sharon Winter

- Creative custom quilting on a domestic machine
- Award-winning fine hand quilting
- Binding, basting, design and quilting services

Please call for an appointment (831) 647-8769

99 Quilt Blocks from Your Favorite Designers
Compiled by Suzanne Woods

MODERN BLOCKS

NEW! Saturday Quilting Classes
Quilting with a Modern Sensibility!
Bella's Thoroughly Modern Quilting Bee
1st Saturday of every month

Series starts Saturday, Feb 1st
11:00 am to 3:00 pm

See Classes to learn more.

Free Pattern Demos
Saturday, February 15
10:30 and 2:00
by Gail Abeloe

- * Free Quilt Pattern
- * Demo on how to sew the pattern
- * Door Prize at both sessions
- * Show and Tell

No need to sign up, just show up and enjoy the fun.

When you attend 4 demos and bring back 3 projects made with Back Porch fabrics, you will earn a free class!

Location: **Back Porch Fabrics, Pacific Grove, CA.**

For a class schedule, go to
<http://www.backporchfabrics.com/>

JOIN US at Empty Spools Seminars 2014

Asilomar Conference Grounds
5-day Quilting Workshops
sponsored by Gayle Wells and Suzanne Cox

held at
Asilomar Conference Grounds
"Refuge by the Sea"
Pacific Grove, California
\$1330.00 per session

Price includes 5-day workshop with your selected instructor, all meals, and lodging (double occupancy). Single supplement available.

| | |
|-------------|-----------------|
| Session I | Feb 16 - Feb 21 |
| Session II | Feb 23 - Feb 28 |
| Session III | Mar 14 - Mar 19 |
| Session IV | Mar 25 - Mar 30 |
| Session V | Apr 27 - May 2 |

For more information write to:
5306 Springridge Court, Fairfield, CA 94534-4005
(707) 864-1170, phone (707) 864-1345, fax
E-mail: info@emptyspoolsseminars.com
View our website brochure:
www.emptyspoolsseminars.com

Road Trips & Local Events

Calendar, Road Trips, and Local Fun Stuff

January Events

Now - Jan 26, 8am-5pm, Ontario Convention Center, *Road to California Quilt Show*, 2000 E. Convention Way, Ontario, CA 91764 www.road2ca.com

Now - Mar 11, 10am-5pm, Back Porch Fabrics, Freddy Moran Exhibit - *A Collection of Collage*, 157 Grand Ave., Pacific Grove, CA. Contact 831-375-4453 or www.backporchfabrics.com

Now - Feb 22, 10am-5am, Rincon Valley Regional Library, *The Pointless Sisters: Quilted Fiber Arts Exhibit*, 6959 Montecito Blvd., Santa Rosa, CA. Hours: Tuesday, Thursday, Friday, 10-6; Wednesday, 10-8; Saturday, 10-4. Closed Sunday and Monday. Contact: 707-573-0162. <http://www.sonoma.lib.ca.us/branches/>

February Events

Now - Mar 11, 10am-5pm, Back Porch Fabrics, Freddy Moran Exhibit - *A Collection of Collage*, 157 Grand Ave., Pacific Grove, CA. Contact 831-375-4453 or www.backporchfabrics.com

Now - Feb 22, 10am-5am, Rincon Valley Regional Library, *The Pointless Sisters: Quilted Fiber Arts Exhibit*, 6959 Montecito Blvd., Santa Rosa, CA. Hours: Tuesday, Thursday, Friday, 10-6; Wednesday, 10-8; Saturday, 10-4. Closed Sunday and Monday. Contact: 707-573-0162. <http://www.sonoma.lib.ca.us/branches/>

Feb 6 - Feb 8, 8am-5pm, Modesto Centre Plaza, *Ricky Tims Quilt Seminar*, Modesto Centre Plaza, 1000 L Street, Modesto, CA. Learn from Ricky Tims, Alex Anderson and Pam Holland at a 2 1/2 day seminar! NO SUPPLIES or MACHINE needed.....just watch, listen and take notes. Register on line at <http://www.rickytims.com/j25/>

Feb 7 - Feb 9, 9am-5pm, Folsom Community Center, *Walk on the Wild Side*, Folsom Quilt and Fiber Guild 29th Annual Show, 52 Natoma Street, Folsom, CA <http://folsomquilt.org/>

Feb 7- Feb 22, 10am-5pm, San Mateo Event Center, *The Quilt, Craft & Sewing Festival*, 1346 Saratoga Drive, San Mateo, CA. \$10 for three days. Bring all your family and friends for our best show in years. <http://quiltcraftsew.com/san-mateo.html>

Feb 20, 4pm-6pm, Asilomar Conference Center, *Empty Spools Seminar's Walkabout*, Empty Spools Open House...come and see what great teachers are teaching. Session 1: Feb 20, 800 Asilomar Ave., Pacific Grove, CA www.emptyspoolsseminars.com

Feb 27, 4pm-6pm, Asilomar Conference Center, *Empty Spools Seminar's Walkabout*, Empty Spools Open House...come and see what great teachers are teaching. Session 2: Feb 27, 800 Asilomar Ave., Pacific Grove, CA www.emptyspoolsseminars.com

Feb. 22, Feb. 23, 10am-4pm, Santa Cruz Fairgrounds, *PVQA Quilt Show*, 2601 East Lake Avenue, Watsonville, CA. Tickets (good for both days) \$8 advance-purchase on website or at Back Porch Fabrics, \$10 at the door. Contact <http://pvqa.org/>.

Tina Magill, Communications Team

**MONTEREY PENINSULA QUILTERS
 GUILD
 PO BOX 1025
 PACIFIC GROVE, CA 93950**

General Meeting: Monday, February 3, 2014 ♦ 6:30 p.m.

| | |
|--|---|
| <p>Location: Pacific Grove Community Center 515 Junipero Avenue (at 15th) Pacific Grove, CA 93950</p> | <p>Meetings are usually held the first Monday of the month at 7:00 p.m. Many members arrive at 6:30 p.m. for an informal social time. Please check the front page for any schedule or location change.</p> |
| <p>Membership: New members are always welcome! Dues are \$35.00, and are due by the September general meeting in order to be listed in the current directory.</p> | <p>Guests are welcome. A \$5.00 fee is charged for entry and participation. Please ask your guest to stop at the membership table.</p> |

Pines & Needles Newsletter

This newsletter is published monthly for the benefit of our members. It is available online at www.mpqg.org. Articles are due on the 15th of the prior month. Please send items to the editor via email at alex@alexandraberger.com

“Pines & Needles” newsletter editor Patty Stuart reserves the right to edit all submissions for content, length, or otherwise for publication.

Advertising Rates per Issue: \$5.00 Business Card; \$10.00 1/4 page; \$18.50 1/2 page; and \$30.00 full page. Annual rates are available. Advertisers should be quilting-related businesses.

Privacy Policy

Any contact information provided in this newsletter – whether phone number, email, address or otherwise – is for the convenience and use of MPQG members, our advertisers and sponsors, and sharing newsletter guilds only. The information may not be sold or used for advertising, spam, commercial or other purposes without the written approval of the MPQG Board.