



General Meeting: Monday, January 7, 2008
6:30 Social hour, Meeting starts @ 7:15 pm
Pacific Grove Community Center

January 7 – Joe Cunningham: Musical Quilt Show
Joe Cunningham Presents “Joe the Quilter”

"Joe the Quilter" is a musical quilt show based on the life of Joe Hedley. Hedley was a tailor born in 1750 in Northumberland, England. At some point he took up quilt making and was known as Joe the Quilter for the rest of his long life. Joe Cunningham has taken the little that is known about Joe's life and quilts and created an unusual way to tell his story. First he made a series of quilts in the style of the times, and then wrote a series of songs to help tell the story of his life.

Joe Cunningham began making quilts professionally in 1979, after a ten-year career as a musician in Michigan. His early mentors were steeped in the history and traditions of quilts, leading Cunningham to a life of study in quilt history and a love of traditional technique. Over the years his work has evolved into a unique personal style both original and shaped by the tradition.



Cunningham travels throughout the country to give lectures and workshops on quilt making. Joe's eight quilt making books include the first biography of a living quilter and a definitive book on marking quilts for quilting called "Quilting with Style," published by AQS. He has been seen on the HGTV series "Simply Quilts with Alex Anderson," as well as "The Quilt Show" with Ricky Tims and Alex Anderson.

Upcoming Lectures:

February 4 – Liz Berg: Traditional to Art Quilter

Liz started making quilts in 1971. However, she began diverging from traditional quilts to explore color and composition in more abstract works. She now considers herself a fiber artist rather than a quiltmaker, although many pieces still fit the original definition of "quilt", i.e., a top, a middle and a backing all held together with stitching. Using a sewing machine as her pen, Liz has completed "watercolor wash" landscapes. She paints and dyes fabrics, both to sell and to use in her own work, and is exploring all the variations of working on and with fiber.

March- Rose Hughes: Great Color Without Fear

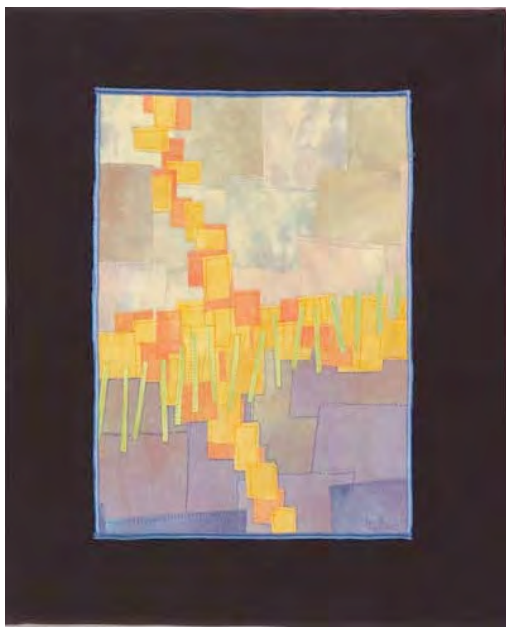
April- Diane Gaudynski: Quilting Designs

May- Cindy Needham

Workshops: *(See page 8 for enrollment form)*

February 3- Liz Berg: Design for Art Quilts

Sunday 10-4 MPC Family & Consumer Science Building



Did you see the beautiful quilts Liz Berg created for "Quilting Arts" Spring, 2006 article? She will help us develop designs for abstract art quilts which can be constructed using numerous techniques. We will complete design exercises to unleash our creativity, using magazine and book photographs as a springboard. The elements of design and the principles of design will be discussed. Ideas will develop on paper for a number of designs that can lead to actual art quilts.

Workshops: continued (See page 8 for enrollment form)

March 2 – Rose Hughes: Fast-Piece Appliqué

Sunday 10-4 MPC Family & Consumer Science Building

Fast, furious and fantastic! In just a day together you'll learn the secret of using machine piecing and appliqué in combination to simplify complicated curves and circles, and get the perfect results you crave in your quilts. But why limit ourselves? Let's also explore how to layer your work with a wide variety of colorful, unique and unusual embellishments – the kind that say YOU in your quilts, your unique signature pieces.



April- No workshop

May 4 - Cindy Needham - Open Thread Bar

Sunday 10-4 MPC Family Consumer Science Building

A One-of-a-Kind Workshop designed to fill a large void in the quilting community---thread education! The morning session will be spent learning about thread quality, weight, tensions, needles, working with decorative threads, and learning how to use different threads in design. The afternoon will be spent at Cindy's Open Thread Bar. Five cases of Superior Threads will be available for us to learn how to use all types of threads at different tension settings on our own machines. We can create a reference panel to use at home, or create a small whole cloth quilt with "thread play."

Love the Mini Workshops!

You requested and the program committee will schedule! **But we need some teachers.** If you have a technique or special skill you'd like to share with the guild members this is your chance. We need at least 10 volunteers to make this program a possibility. Contact any of the members on the program committee by **February 1st** to let us know your interest.

Allison Barrett-Program

Upcoming Quilt Events

Dec. 2-Feb. 6 **Off the Bed – On the Back:** Quilts and garments made by Rachel Clark and her friends
Back Porch Fabrics and Quilt Gallery,
157 Grand Ave. at Central Ave., Pacific Grove
Mon.-Sat. 10-5, Sun. 12-4. 831-375-4453

President's Letter

Dear Members,

Welcome to 2008.

Thank you to all the groups that contributed baskets to the guild Holiday party. Thank you to all those who contributed to making it a successful evening. I was so pleased to win the Tea Timers basket. Being only a tea drinker it was most appropriate. Now I have to figure out what to do with the fabric that was included.

I challenge all of you to use the fabric that you won and bring something back to share in a few months. Instead of just adding it to your stash do something with it! I am including myself in that challenge. When I was called to look at the "stash" of a local sewer who had recently passed on, I had to think about my own stash and all the fabric that I had collected over the years and had never used. She left hundreds of pieces of fabric and there it sat. What are we doing with all of the things that we have bought and then leave behind for someone else to discard. All of us need to look at our stashes and challenge ourselves to find something to do with it. I am not necessarily talking about the current stuff, but of those boxes of UFO's and old polyester fabrics from the 60's and 70's. I am talking about myself as much as everyone else. We have a rummage sale as part of the quilt show, so donate some of it to the guild, but others, find a young person and teach them to sew. We have a group who made those wonderful quilts for us that were at the Holiday meeting. Donate some of it to them.

So my challenge to each and every one of you for this new year, finish what is started, create something wonderful and look long and hard at that polyester fabric made to make that jumpsuit for your husband, and clean up your stash.

Roberta Brunet-MPQG President

Kudos to Claudia Gano

Congratulations to Claudia Gano for another successful and fun Holiday Party! This year's turnout was smaller than last year but your generosity certainly wasn't dampened. The prizes were provided by Ann Anderson of Quilt Woman.com. This year the Holiday Party brought in enough money for us to donate \$1,500 in grants!

Great job! Thanks also goes to Claudia's "Elves" - Linda Phillips, Kay Scannell, Kathy Weston, Alice Stoll and Barbara Childs who created enthusiasm and generated \$300 from the live quilt auction, great job Barbara - and all of the members who pitched in to help: Genie Santini, Jim Shillinglaw, Suzie Campbell, Dale Agron, Karen Milne, Sally Deykerhoff, Terry Cotham, and Miriam Hawthorne.

Opportunity Quilt 2008

Thank you for the wonderful response from the holiday mailing of the Opportunity Quilt tickets. The quilt will be on display at the Home Town Sewing Center in Marina through January. It will then be moved to The Back Porch Fabrics in Pacific Grove and end its exhibition at The Hand Maden in Pacific Grove. Tickets will be available from all of these locations. If you have any questions or need more tickets mailed to you, please let me know.

Cheryl Smith 831.484.8010 dacherpwd@gmail.com

Opportunity Quilt 2009

The 2009 Raffle quilt is going to be the MPQG rendition of The "Dear Jane Quilt" from 1863. The blocks are out at Your HomeTown Sewing Center in Marina; we are asking that all blocks be returned by the January meeting in 2008. Call me if you have time to do another block; there are 15 more to do. There will be a workshop to start assembling the quilt so if you want to participate, give me a call at the store @582-2595. I would love to have anyone who wants to help.

Roberta Brunet

MPQG Board of Directors Meeting

The MPQG Board of Directors will meet next at 6:30 pm on Wednesday, January 16, 2008, at St. John's Episcopal Church, 1490 Mark Thomas Drive, Monterey.

Nancy Goehring, Secretary

Quilt Show Preview

It's that time again....to prepare for our 2008 Quilt Show. Appointments for Quilt Show Preview will be available at two different times. March 3rd, 2008 starting @ 5:30 prior to our regular meeting and again on Saturday, March 15th starting at 9:00 AM. Sign ups for these appointment times will begin at our January meeting. Saturday appointments will be conducted at my office located at 2801 Monterey-Salinas Hwy, Suite D, Monterey, CA. Each appointment will take approximately 5 minutes. The applications should be completed PRIOR to your appointment arrival. Also, this year, we will be taking head-shot photos of the quilters for placement on the Quilt Show labels for those who would like (strictly optional). I will start taking these appointments at our January, 2008 meeting.

Also, I'm looking for about 12 members to serve on the Preview Committee. These people will be asked to serve on both Monday, March 3rd and all day, Saturday, March 15th. It will be a fun committee that oversees the application process, holding quilts for photos, picture taking, and all related jobs. Committee members should be able to serve on Saturday starting at 8:30 AM until our last scheduled appointment. Signups for this committee will be taken at the January meeting.

It would be nice to save the Monday meeting appointments for the members who have to come from cities away from our most immediate area, so they won't have to make a separate and special trip for a 5 minute appointment. If you have any questions, you may call me at (831) 899-4810 in the evening or during the day at (831) 372-7000.

Colleen Johnson, Quilt Show Previews

Community Liaison

Community Liaison contributed 50 quilts to the neonatal units and 10 to the dialysis center. Good job Guild!!! Thanks!

Sally Deykerhoff

MPQG Quilt Show: Ruth King Memorial Award

The Ruth King Memorial Award was initiated in 1991 and the prize money (\$100) is donated anonymously. An independent committee, chosen by the donor of the prize judges the quilts. The committee does not include the judges of the quilt show.

Ruth King was a wonderful woman who lived to quilt. She participated in the guild enthusiastically. She was a good friend to everyone. There was

MPQG Quilt Show: Ruth King Memorial Award (continued)

no age discrimination, and she was always willing to share her time and her talents. Her quilts were very traditional and perfect in every way. Ruth passed away in the summer of 1989, and so in her memory this award has been set up. A ribbon will be awarded as well in addition to the cash prize.

ELIGIBILITY REQUIREMENTS

- a. The quilt maker must be a PAID member of the MPQG.
- b. The quilt must be made ENTIRELY by that member.
- c. The quilt must be a traditional, identifiable pattern
- d. The quilt must measure at least 60" x 60"; i.e., a bed-size quilt.
- e. The quilt must demonstrate SUPERIOR workmanship.
- f. The quilt MUST be hand or machine pieced, hand appliquéd, or a combination of those techniques.
- g. The quilt MUST BE HAND QUILTED.

Member Survey Results:

	No Interest	Limited Interest	Mildly Interested	Interested	Very Interested
	Percent	Percent	Percent	Percent	Percent
Speakers/Meetings	0.00	0.03	0.08	0.10	0.78
Newsletter	0.00	0.05	0.08	0.21	0.66
Quilt Show	0.02	0.04	0.09	0.17	0.67
Monthly Workshops	0.01	0.05	0.18	0.28	0.49
Membership Directory	0.07	0.09	0.16	0.29	0.39
Lending Library	0.07	0.09	0.20	0.26	0.38
Web Site	0.19	0.13	0.20	0.17	0.30
Friendship Groups	0.19	0.16	0.19	0.18	0.27
Opportunity Quilt/Raffle	0.04	0.08	0.38	0.27	0.23
Community Service	0.04	0.13	0.28	0.35	0.21
Challenge Quilts	0.18	0.26	0.27	0.18	0.12
Block Of The Month	0.30	0.21	0.17	0.22	0.10

If you have questions about the survey please contact Ann Igoe (831-241-4320).

Challenge Quilt

It is that time of year again. Our Challenge packets for 2008 are now ready and on sale at monthly guild meetings. Our theme is "Women in Hearts." The quilt has to be a total of 120" and you have to use at least 50% of the fabric on the front of the quilt and add any other fabric you like. Look for me next to Block of the Month.

Stella LePine, Challenge Quilt Coordinator

**Your HomeTown
Sewing Center**
*The area's largest full
service sewing center*

Sewing Machines • Sergers
Fabric • Yarn • Notions
Classes • Software • Quilting,
Knitting & Embroidery Supplies

Guild Appreciation Day
3rd Tuesday of each month
20% Discount
on all but machines & software

Come visit our 9,000 sq ft store
215-H Reservation Rd, Marina
(831) 582-2595
www.hometownsewing.com

Back Porch Fabrics

***Stop by on the
3rd Saturday of each month
at 10:30 or 2:00 for a
Free Quilt Demo***

157 Grand Ave. at Central
Pacific Grove, California
831-375-4453

Check new class schedules on
Our website:

<http://www.backporchfabrics.com>

An Evening with Kaffe Fassett

Sponsored by Back Porch Fabrics and Monarch Knitting & Quilting

Thursday, January 3, 2008 Pacific Grove Middle School
835 Forest Ave. Pacific Grove
7:00 pm

Advance tickets only - \$15
Available at Back Porch Fabrics

Workshop Registration Form

Please sign me up for:

		<u>Members</u>	<u>Non-Members</u>
Feb. 3	Liz Berg: Creative Exercises Designing an Original Abstract Quilt <i>Currently full - Add your name to the waiting list.</i>	\$40.00	\$50.00
Mar. 2	Rose Hughes: Fast-Piece Appliqué	\$40.00	\$50.00
April	No workshop		
May 4	Cindy Needham	\$40.00	\$50.00

Name: _____

Telephone: _____

Address: _____

Make your check payable to MPQG and send to Dee Davis, 1338 Lincoln Ave, Pacific Grove, CA, 93950. Questions? Email workshops@mpqg.org or call Dee @ 831-372-6454.

Please note: Places are secured in all workshops when payment is received. If you need to cancel, please give at least 7 days notice. No refunds will be made unless replacement can be found.

Monterey Peninsula College Fashion Program

The Monterey Peninsula College Fashion Program will offer a quilting class during the **Spring 2008** session. The class is Section 4509 **Fashion 197.1 Quilting Trends and Techniques** and Master quilter Jeannie Aschenbrenner will present traditional quilting techniques and current timesaving methods to speed up the process of quiltmaking. A variety of patterns and quilt sizes are offered to suit student needs. This is a hands-on course. It is offered **Tuesdays, February 5 through April 29, 2008** 1:10-4:00pm, Room: Family and Consumer Science Building 106. Call 646-4125 for information or see the class schedule on www.mpc.edu.

Entry Form

PACIFIC GROVE MUSEUM OF NATURAL HISTORY
WILDLIFE AND HABITAT QUILT SHOW
April through June, 2008

The Pacific Grove Museum of Natural History invites you to submit your quilt to the Wildlife and Habitat Quilt Show. The exhibit will be juried, but not judged.

Entries are due January 15 2008, and acceptances will be sent by February 5. Please send color photographs of the whole quilt and a close up. Write the title, dimensions, your name and indicate the top of the quilt on the back of the photographs. *Fill out a separate form for each entry.*

Send entries to Regina Liske, 682 Lyndon St., Monterey, CA 93940
Information: Phone 831-333-9302

This is a wildlife/habitat show. All quilts must include wildlife like deer, birds, butterflies, etc., or wildlife habitats like woods, desert, water, or State/ National Parks, etc. from the local area, California and the western U.S.

Quilt minimum width is 24" and maximum length is 72".

Security: The museum is locked at night with two security cameras in place.

Detach and fill out a separate form for each entry

Name (Print): _____ Signature _____

Street: _____ City: _____ Zip: _____

Phone: (H) _____ (W) _____ Email: _____

Title of Entry: _____

Maker: _____ Owner: _____

Quilted by: _____

Design Source (be specific): _____ Date Made: _____

Story (describe wildlife and/or habitat in 75 words or less. Please print clearly):

Is this entry for sale? **YES / NO** If **YES**, enter price \$ _____

Quilt Size (in inches): **Height** _____ **Width** _____

February 2008

Block of Month: Friendship Star (variation 1)

Fabric: Let's make the Friendship Star in two shades or prints of blue, and the four-patch corners green and white/off-white.

- Cut:**
- Fabric A = blue center square: one 4-1/2" square
 - Fabric B = another blue for the arms of the Star: one 4-7/8" x 9-3/4" rectangle
 - Fabric C = background white or off-white: one 4-7/8" x 9-3/4" rectangle **and** one 2-1/2" x 20" strip
 - Fabric D = green for the four-patch corners: one 2-1/2" x 20" strip

Piecing the Block:

1. Make four half-square triangles, just as you did in January for the Friendship Star:



1) Place the two 4-7/8" x 9-3/4" rectangles with right sides together, lightest of the two fabrics on top. Lightly draw a straight line 4-7/8" from the short edge dividing the rectangle in half and forming two squares. Then draw two diagonal lines through the center of the two squares as shown.



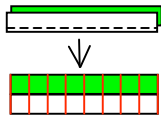
2) Still holding the two rectangles together, sew a 1/4" away from the diagonal line on both sides.



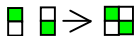
3) Cut the rectangles apart on the drawn lines creating four half square triangle components. Press the seams to the darker fabric. The finished units should measure 4-1/2" square.



2. Next, make the four-patch corners:



1) Start by sewing your Color C and Color D 2-1/2" x 20" strips together along one long side, right sides together, and using a scant 1/4" seam. Press seam allowances towards green fabric. Then, mark and cut these strips as shown at 2-1/2" intervals to make pieced strip units, each 2-1/2" x 4-1/2".

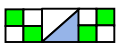


2) Next, using two pieced strip units, pivot one, and sew them together with a scant 1/4" seam, right sides together. Press the seam carefully to one side. Make four of these units, each measuring 4-1/2" square.

3. Then, make the rows and sew them together:



1) Piece two of the half square triangle components with the 4-1/2" Fabric A square as shown to create the center row unit of the Block. Press the seams in toward the center square.



2) Create the upper and lower Block rows by piecing together one of the half square triangle blocks with two of the 4-1/2" four-patch squares as shown. Press the seams out toward the four-patch squares.



3) Piece the three Block rows together as shown to create the finished Block. Press the seams toward the outside edge of the Block. The finished Block should measure 12-1/2" inches square which includes a 1/4" seam allowance on all sides.