

General Meeting: Monday August 4

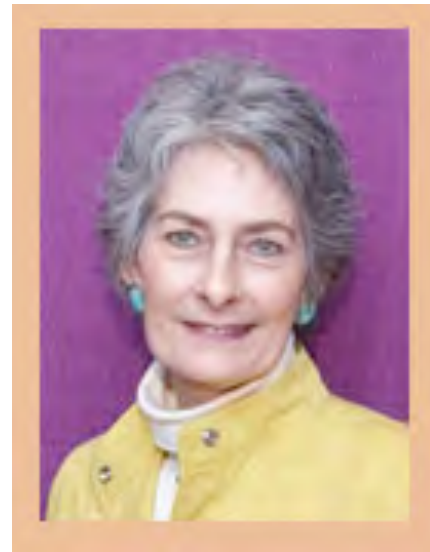
Refreshments/Committees 6:30 pm Lecture 7:15 pm

Pacific Grove Community Center, 515 Junipero Ave, Pacific Grove

Sally Collins: “Borders, Bindings and Edges”

“The single largest influence on our ability to succeed is attitude. The basic truth is: if we think we can, we will; if we think we can’t, we won’t. Attitude is the first choice we make, and it is one we have exclusive control over. Choosing a positive attitude ensures eventual success of any goal.”

And successful she is. Sally Collins is an award winning quilt maker, teacher, and author who has been quilting since 1978 and teaching since 1985. Her quilts range in size from small to wall size and although she is most recognized for her quality workmanship, attention to detail and teaching expertise, her continual love and interest is in the process of quilt making, the journey. She loves the challenge



Upcoming Lectures & Workshops

September 7, **Cathryn Zelaney**, Workshop: *The Value of Value*

September 8, **Cathryn Zelaney**, Lecture: *“How to Turn on Your Light Bulb”*

October 6, **Sandy Klop**, Lecture: *“The American Jane Story in Fabric”*

November 1 & 2, **Jan Krentz**, Workshop: *Quick Broken Star Quilt*

November 3, **Jan Krentz**, Lecture: *“Quilts and Techniques”*

August Lecture- Sally Collins continued

of combining design, color, and intricate piecing in a traditional styleur lecture this evening focuses on the “Borders, Bindings, and Edges” of a quilt. Sally will present both slides and quilts to explain and illustrate numerous border, binding, and edge styles and include topics such as color, fabric, proportion, and scale. The author of several books, her most recent, "Mastering Precision Piecing", shares her approach and methods for achieving quality workmanship in any scale, to help quilt makers critique and correct their own work, improve and advance their creative and technical skills, and find joy and value in the process.

Workshops

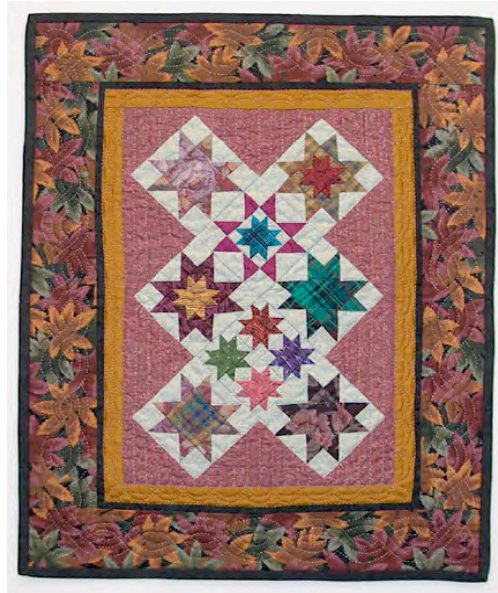
August 3: My Stars: Sally Collins

We are so fortunate to have nationally-known quilt artist Sally Collins for our August workshop. We chose this workshop because it combines many of the special techniques Sally teaches. See her website: www.sallycollins.org.

This Broken Star design features “fussy cut” diamonds, simple piecing of diamonds to triangles. This design is suitable for a newer or less skilled quilt maker (or a quilter who is challenged by accuracy when piecing their designs).

This project combines 3” and 1-1/2” sawtooth stars focusing on accuracy as students create double half-square triangle units to create the block(s). Students can choose either one or both sizes, depending on their

skill level. Class time will be spent between lecture, explanation, demonstration and student sewing time. A handout for the project is included. Skill Level: Very Confident Beginner and beyond.



Workshops-continued

September 7 - Cathryn Zelany - "The Value of Value"

This class concentrates on using value to make simple objects appear realistically three-dimensional. Students will learn how to interpret a photograph as a nine-step value gradation and make it into a fused mini-quilt.
(No sewing machine needed)



There will be a demonstration on dividing a fabric stash into a nine-step value scale, and another on fusing as an appliqué method. Participants have three choices for the in-class time: to make a quilt from the instructor's patterns, to practice making patterns from the instructor's photographs, or to bring their own photographs with which to make their own design patterns.

November 1-2 Workshop- Jan Krentz

The November Two-Day Workshop is offered by Jan Krentz with three expertise options for a lap size quilt. This workshop is based on new material from Jan's latest set of book and workshops. Purchase of a ruler set is required (\$25 plus CA tax). You can get these at your local quilt shops or purchase them at the class. www.jankrentz.com

Option 1:

This Broken Star design features "fussy cut" diamonds, simple piecing of diamonds to triangles. This design is suitable for a newer or less skilled quilt maker (or a quilter who is challenged by accuracy when piecing their designs).



November 1-2 Workshop- Jan Krentz –continued

Option 2:

This design features *solid, "fussy cut" diamonds* and set-in squares and triangles, optional trim outlining center diamonds. Moderate skill level and difficulty.



Option 3:

This design features *split diamonds* and set-in squares and triangles. Moderate skill level and difficulty.



Door Prize Report

Our July Birthday fabric of "Water Lilies" was won by Dale Agron this past month. Thanks to "Your Hometown Sewing Center" for the donation. Susan Michelson donated "China Delight" a batik purse with a batik dragon panel, along with yardage and porcelain bracelet and pearl earrings. Jeanne Krener donated a beautiful set of Botanical Prints. The Guild had a donation of a Ruth McDowell quilting book, and June Cornell, and Gail and Mindy donated a summery pack of charm squares, fabric panel and stationery notes. Thank you to all of the above mentioned for your donations. Our July lucky winners were Janet Borchardt, Dorothy Abeloe, Gail Hoff, and Carole Olsen. Just a reminder: Our August Door Prize Raffle will be donated by Gail Abeloe. She donates a gift for every year Back Porch Fabrics has been in business. You won't want to miss our August meeting!

Gail Hoff and Mindy Leliaert

Quilt Show 2008 VIEWERS CHOICE – BALLOT RESULTS

#40 – The Monster Quilt	Colleen Johnson	1 st Place	57 Votes
# 38 – Plates and Parens	Teri Cotham	2 nd Place	34 Votes
#182 – Midnight in the Garden	Gwen McKee	3 rd Place	31 Votes
#145 – Enchantment	Claudia Gano	4 th	26 Votes
#84 – Does the Wild Bear	Susan Michelson	5 th	22 Votes
#60 – Hot Tub Flowers	Gail Abeloe	6 th	21 Votes
#127-Five Persimmons	Margaret Nava	7 th	19 Votes
#74 – Vine Country	Karen Milne	8 th	17 Votes
# 1 – Civil War Triple 4-Patch	Julie Kato	9 th	16 Votes
#10 – Welsh Beauty	Wendy Reyes	9 th	16 Votes
#173 – I Heard it through the Grapevine	Marilee Kline	10 th	15 Votes

Notes: Total of 331 Ballots Cast
Total of 852 Votes Cast

Workshop Registration Form

Please sign me up for:

		<u>Members</u>	<u>Non-Members</u> *
Aug 3	Sally Collins	\$ 40.00	\$ 50.00
Sept 7	Cathryn Zeleny	\$ 40.00	\$ 50.00
Nov 1&2	Jan Krentz (two day) (add'l \$25 ruler needed; buy before or in class)	\$ 80.00	\$100.00

Name: _____

Telephone: _____

Address: _____

Email: _____

Make your check payable to MPQG and send to Dee Davis, 1338 Lincoln Ave, Pacific Grove, CA, 93950. Questions? Email workshops@mpqg.org or call Dee @ 831-372-6454.

Please note: Places are secured in all workshops when payment is received. If you need to cancel, please give at least 7 days notice. No refunds will be made unless replacement can be found.

Opportunity Quilt

I would like to thank all of the members of the guild for their support of the 2008 Opportunity Quilt. Without your assistance we would not have raised the funds necessary to continue our community projects.

Cheryl Smith-Opportunity Quilt Publicity

Upcoming Quilt Events

Through August 6 **A Stitch in Time**

Quilts made by Pat Tillson Back Porch Fabrics and Quilt Gallery, 157 Grand Ave. at Central Ave., Pacific Grove Mon.-Sat. 10-5, Sun. 12-4. 831-375-4453

Through August 24 **Pun Intended: The Appliquéd Wit of Dorothy Vance** features 14 humorous quilts juxtaposing folk art, politics and pop culture. Dorothy Vance is known for her unique, clever and humanly charming folk art quilts, and this exhibition showcases this original work and the vision of an imaginative and irrepressible artistic personality. **San Jose Quilt Museum** 520 South First Street San Jose, CA 95113 Tel: 408.971-0323

2008-9 MPQG Nominations & Vote

During this August meeting guild members will vote on 2008 officers and standing coordinators. The following members have agreed to be on the slate for voting; additional nominations can be made from the floor. About half of the board, coordinators and committee chairs are new each year. Terms are generally two years, but sometimes circumstances change and people can only stay for one year.

President:	Robert Brunet (thru 2009)
1 st Vice President:	Pending (thru 2010)
2 nd Vice President:	Jeanne Krener (thru 2009)
Secretary:	Sue Michelson (thru 2010)
Treasurer:	Lauren O'Neill (thru 2010)
Activities Coordinator:	Alicia Lafferty (thru 2010)
Communications Coordinator:	Janet Borchardt (thru 2010)
Community Outreach Coordinator:	Sally Deykerhoff (thru 2009)
Fundraising Coordinator:	Sharon Coniglio (thru 2010)
Membership Coordinator:	Steve Clizbe & Florence Lee (through 2010)
Program Coordinator:	Carol Catalano (through 2009)

The complete list of 2008-9 committee chairs and supporting committees will be published in the September newsletter.

Contact: Jeanne Krener 831-648-1414 jeanne.krener@yahoo.com

Membership Renewals for 2008-9

Dear Members: It is time to renew your 2008-9 MPQG membership. Please renew ASAP so you can be sure to be included in the Directory, which is going to look a bit different. I prefer that you renew with a check, so I have a record of your payment. The renewal fee is \$35, and if you are late, the fee is \$40. If you renew after October, be prepared to pay \$40. I will have renewal forms available at the August meeting to attach to your check. Make sure you attach your check to the form and turn it in to the Membership table. Don't be left out of the Directory! It's not much good if it's not complete. If you can't make it to the meeting, mail your renewal form and check to: Chris Raarup, P.O. Box 4083, Salinas, CA 93912

Chris Raarup, Membership Chair (831) 449-3169

Name _____
Address _____
Home # _____ Cell# _____
Email _____

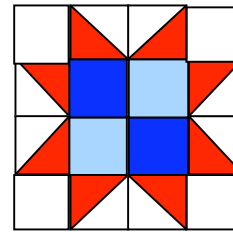
Membership Tasks

The success of any guild depends on the volunteerism of its members. Through the years, the guild has had many active and enthusiastic members who have taken the opportunity to share their time, talents and skills toward maintaining our outstanding guild. Even though you may have volunteered in the past, we continue to need everyone's help and participation to continue our long and successful tradition of exceptional activities and programs. Please check the activities or areas where you have expertise and interest when you renew your membership.

Accounting/Finance _____
Community Outreach Projects _____
Design and Layout _____
Event Planning _____
Friendship Groups _____
Fundraising _____
Handwork/Finishing Quilts _____
Sales and Marketing _____
Writing and Editing _____

Four Patch Star

September 2008



Fabric: The Four Patch Star Block requires three different fabrics with good contrast, and a white or off-white fabric. Use 1/4" seams throughout, and be careful to match your points!

Cut:

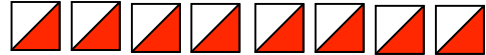
- four 3-1/2" squares of white/off-white fabric
- two 3-7/8" x 7-3/4" rectangle of white/off-white fabric
- two 3-7/8" x 7-3/4" rectangles of red fabric
- one 3-1/2" x 7" rectangle of bright blue fabric
- one 3-1/2" x 7" rectangle of a different, complementary blue fabric

Make half-square triangles:

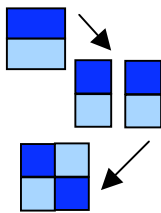
1) With right sides together, place a red and a white/off-white 3-7/8" x 7-3/4" rectangle on top of each other, lightest of the two fabrics on top. Lightly draw a straight line 3-7/8" from the short edge dividing the rectangle in half and forming two squares. Then draw two diagonal lines through the center of the two squares as shown. Pin the two rectangles together. Sew a line 1/4" away from the diagonal line on both sides. Repeat with the other two 3-7/8" x 7-3/4" rectangles.



2) Cut the rectangles apart on the drawn lines creating four half-square triangle components. Press the seams toward the red fabric. The finished half-square triangles should each measure 3-1/2" square.

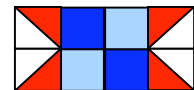


3) Sew together two half-square triangles as shown. Repeat this step to make four units ("half-square triangle rows"). Each should measure 3-1/2" x 6-1/2."

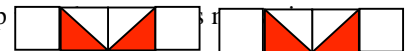


4) Sew together the 3-1/2" x 7" blue and complementary blue rectangles, right sides together. Press the seam toward the bright blue side. Cut the sewn rectangle in half to make two units, each measuring 3-1/2" x 6-1/2." Reverse one, and sew them together to make one four-patch unit as shown. The four-patch unit should measure 6-1/2" square.

5) Sew a half-square triangle to each side as shown, pressing the seam toward the blue four-patch. This creates the middle row of your Block. It should measure 6-1/2" x 12-1/2."



6) Sew one 3-1/2" white/off-white square to the end of a half-square triangle row, pressing the seam toward the white end. Sew another 3-1/2" white/off-white square to the other end of the row, and then press the seam toward that white end. Repeat this step 3-1/2" x 12-1/2."



These are the two outer rows of your Block.

7) Assemble the three rows as shown to complete your Four-Patch Star Block.

