



**Pines & Needles
Monterey Peninsula Quilters Guild
December 2007 Newsletter
Volume 42 Number 12**

<http://www.mpgg.org/>

Holiday Party: Monday, December 3, 2007

Party Time: 6:30 p.m.

515 Junipero Ave. Pacific Grove

We have a fun night planned that includes entertainment this year!!!

Activities: refreshments, community quilts to be given to recipients, entertainment, games, baskets, holiday quilts to view, and live auction of a quilt top.

Please bring finger foods for refreshments and funds to purchase a ticket for a chance to win a basket!

Tickets may be purchased for \$1.00 per ticket or 6 tickets for \$5.00. Members may win more than one basket.

Please include the names of the donors and a list of the items in the basket.

The revenue generated from the baskets will be given to quilt and sewing related grant recipients.

Please contact Claudia Gano Committee Chair at 659-0650:

-if you would like to display your Holiday Quilt at the party even if you displayed it last year. I will need the size.

-if you would like to donate a Holiday basket.

Thank you for your contribution and supporting the guild. I am looking forward to seeing you all!

Claudia Gano



Upcoming Lectures:

January 7 – Joe Cunningham: Musical Quilt Show

February 4 – Liz Berg: Traditional to Art Quilter

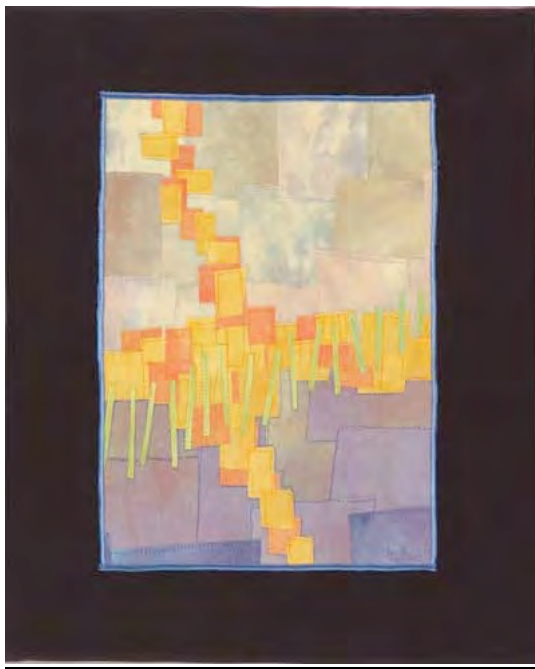
Liz started making quilts in 1971. However, she began diverging from traditional quilts to explore color and composition in more abstract works. She now considers herself a fiber artist rather than a quiltmaker, although many pieces still fit the original definition of "quilt", i.e., a top, a middle and a backing all held together with stitching. Using a sewing machine as her pen, Liz has completed "watercolor wash" landscapes. She paints and dyes fabrics, both to sell and to use in her own work, and is exploring all the variations of working on and with fiber.

April: Diane Gaudynski: Quilting Designs

Workshops: *(See page 8 for enrollment form)*

February 3- Liz Berg: Design for Art Quilts

Sunday 10-4 MPC Family & Consumer Science Building



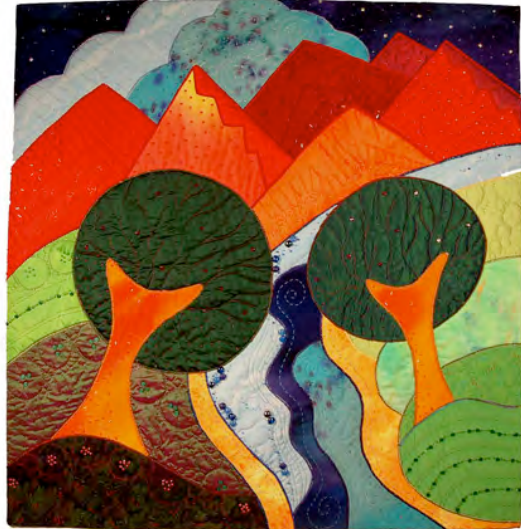
Did you see the beautiful quilts Liz Berg created for "Quilting Arts" Spring, 2006 article? She will help us develop designs for abstract art quilts which can be constructed using numerous techniques. We will complete design exercises to unleash our creativity, using magazine and book photographs as a springboard. The elements of design and the principles of design will be discussed. Ideas will develop on paper for a number of designs that can lead to actual art quilts.

Workshops: continued *(See page 8 for enrollment form)*

March 2 – Rose Hughes: Fast-Piece Appliqué

Sunday 10-4 MPC Family & Consumer Science Building

Fast, furious and fantastic! In just a day together you'll learn the secret of using machine piecing and appliqué in combination to simplify complicated curves and circles, and get the perfect results you crave in your quilts. But why limit ourselves? Let's also explore how to layer your work with a wide variety of colorful, unique and unusual embellishments – the kind that say YOU in your quilts, your unique signature pieces.



Upcoming Quilt Events

until 1/6/08

**San Jose Museum of Quilts & Textiles
Saturn Returns: Back to the Future of Fiber Art
Special 30th Anniversary Exhibition**

For the first time, the work of thirty of the most influential fiber artists of our time will be presented together in a singular exhibition. Reflecting the scope of the museum's mission, the work of these thirty artists spans the range of fiber arts; half are quilt artists, while others use tapestry, weaving, embroidery, ikat, beading, and mixed media to create their art.

Dec. 2-Feb. 6

**Off the Bed – On the Back: Quilts and garments made
by Rachel Clark and her friends
Reception for the artists
Sunday, December 2, 1-3 pm
Back Porch Fabrics and Quilt Gallery,
157 Grand Ave. at Central Ave., Pacific Grove
Mon.-Sat. 10-5, Sun. 12-4. 831-375-4453**

Kudos to Ann Igoe

The MPQG Board would like to thank Ann Igoe for producing our outstanding membership Directory. It is a big task requiring accuracy and many hours of intense work. It is also a very important job as this is how members are linked to one another and how the guild is able to coordinate its many activities. It looks great, Ann! Thank you for a job well done!

Member Directories-Available December 3 Meeting

Please stop by the Membership table to pick up your Guild Directory if you have not already done so. It would save \$ if we do not have to mail them out to you. If you renewed after the September cut off date, your name will not appear in the Directory. We hope to issue supplemental pages with the additional member names that didn't get in the Directory. By the way, if you have not renewed your Membership yet and wish to do so, it's not too late! Checks can be mailed to Chris Raarup, PO Box 4083, Salinas, CA 93912. Thanks,

Ann Igoe/Chris Raarup, Membership Co-Chairs

Door Prize Report

We had a fabulous Christmas basket donated by Norma Peterson for our November Door Prize. It included a set of placemats & napkins, tea towels, a candle and "10 yards" of holiday fabric. We also had donations of precut Christmas kits by Diana Vorne, Gudny Campbell, and Janyce Anderson. Sally Deykerhoff contributed with a bottle of Riesling, and your Hometown Sewing Center generously donated the November Birthday fabrics won by Genie Santini. **Thank you** all for the great door prizes! Our November winners were Bert S., Dolores Tompkins, Bev Hannigan, Genie Santini, and Marie. We're looking forward to the Christmas Party and the many donations by our Guild members. The festive baskets always make this a fun event to attend. See you there!

Gail Hoff and Mindy Leliaert

MPQG Board Minutes

Summaries of past board meetings are now available in the "Members Only" section of the Web site.

Nancy Goehring, Secretary

MPQG Board of Directors Meeting

The MPQG Board of Directors will meet next at 6:30 pm on Wednesday, January 16, 2008, at St. John's Episcopal Church, 1490 Mark Thomas Drive, Monterey.

MPQG Board Planning Goals

After input from the 2006-2007 board of directors, the current MPQG Board recently held an in depth planning and training workshop with Lisa Bennett, a professional consultant to non-profit organizations. Lisa lives in Pacific Grove and is currently on the P.G. council. Her workshop focused on updating goals for the guild, roles and responsibilities of Board members, streamlining work of the board, and increasing the involvement and quality of volunteer experiences.

Returning and new Board members came away with enthusiasm to 'fine-tune' the guild's objectives and to streamline the way the Board conducts its business. As a result the Board appointed an ad-hoc (short-term) committee consisting of Carol Catalano, Sharon Coniglio, Nancy Goerhing, Jeanne Krener, and Jeanne Mills. This group will make specific recommendations in early 2008 to the Board about how to incorporate Lisa Bennett's suggestions.

June Quilt Show: Are you ready?

Just a reminder about the June quilt show. It is not too soon to start thinking about the quilts you will enter. If you wish, you will be able to have your quilt judged. It is both a fun and educational experience that will give you the feedback you need to grow as a quilter. Bring all your family and friends to the quilt show to see your beautiful work!

The previewing process will begin at the March meeting and one Saturday after. The quilt or garment does not have to be completed by the date of the previews, just promise to have it done by the show. This is an experience you won't want to miss!

Marge Abel-Quilt Show Coordinator

Community Liaison

Please bring your completed Dialysis Quilts and Neo-Natal Quilts to the December meeting so that they may be given to the people from the clinics. Thanks for your participation!

Sally Deykerhoff

Opportunity Quilt 2009

The 2009 Raffle quilt is going to be the MPQG rendition of The "Dear Jane Quilt" from 1863. Jane A. Blakely Stickle made the original quilt. Brenda Manges Papadakis found the quilt in a museum in New England and decided to reproduce it. She then wrote a book about her adventures, and the Electric Quilt Company then published a program to accompany their Electric Quilt program. We as a guild are going to do our own version of the quilt. The original quilt was done in all 4 ½ blocks. We are making ours with 4 ½", 6" and 9" blocks. Our colors will be done in Red, White, and Blue. There are no other requirements. Any red, white or blue fabric will do.

At this point the president, Roberta Brunet, is the chairperson until someone else comes forward. The blocks are out at Your HomeTown Sewing Center in Marina and will also be available at the next meeting. We are asking that all blocks be returned by the January meeting in 2008. There will be over 200 blocks in the completed quilt, so there's lots of work to be done.

Roberta Brunet

**Your HomeTown
Sewing Center**

*The area's largest full
service sewing center*

Sewing Machines • Sergers
Fabric • Yarn • Notions
Classes • Software • Quilting,
Knitting & Embroidery Supplies

Guild Appreciation Day
3rd Tuesday of each month
20% Discount
on all but machines & software

Come visit our 9,000 sq ft store
215-H Reservation Rd, Marina
(831) 582-2595
www.hometownsewing.com

Back Porch Fabrics

***Stop by on the
3rd Saturday of each month
at 10:30 or 2:00 for a
Free Quilt Demo***

157 Grand Ave. at Central
Pacific Grove, California
831-375-4453

Check new class schedules on
Our website:

<http://www.backporchfabrics.com>

The Story Behind MPQG's Opportunity Quilt

How It All Began:

In 2003, then VP, Gloria Hatton, asked Mary Ellen Parsons if she would design the raffle quilt for the Guild. Of course, the answer was "Yes, but...we are so busy now." Indeed, the Parsons were very busy with their family business venture *The Parsonage Village Vineyard and Winery*. Hence, the target date for the design was set for 2008.

The Team:

True to her word, Mary called to say the design was complete in January 2007. The patterns were enlarged and eight talented appliqué artists volunteered to execute the design; Janyce Anderson, Cheryl Classen, Helen Egerton, Joan Hughes, Judy Marra, Jeanne Mills, Jeannie Riddell, and Maggie Wenzel. Janet Taillon, from Back Porch Fabrics, helped select the fabrics and together with Gloria helped Mary Ellen cut and package the materials. When the blocks were completed they were sewn together with the assistance of Cheryl Classen. The quilt was custom quilted by Mary Lundberg of Bonnie Doon. Sharon Winter helped Cheryl put on the binding. Jeannie Riddell added the final touch of embellishment, beautiful silk ribbon flowers and exquisite beading to complete the quilt. The quilt was photographed at the factory owned by Bev Hanagan and her husband in Hollister. The photograph will be included with any marketing and on the postcard that will soon be available for distribution, thanks to Gudny Campbell.

Cheryl Smith is now marketing the quilt and will soon ask you to do your part in this fundraising endeavor, buying and selling the chances to win this quilt.

A Big Thank You to All:

The Board of Directors would like to thank all of the dedicated members for the time and expertise they have given this project. The board is also grateful for anything that members can do for the Guild. It takes many people to accomplish our goals. Mary Ellen Parsons has again volunteered to help. She will be our featured artist at the 2008 Quilt show. Some of her other quilts can be seen at www.parsonagewine.com and several appear in publications by C & T Publishers. Giclées, and other original quilt art are available at the *Parsonage Wine & Art Gallery* in Carmel Valley Village.

Just think some lucky person will win this work of art on June 15, 2007!!

Workshop Registration Form

Please sign me up for:

| | | <u>Members</u> | <u>Non-Members</u> |
|--------|----------------------------------------------------------------------|----------------|--------------------|
| Feb. 3 | Liz Berg: Creative Exercises Designing an Original Abstract Quilt | \$40.00 | \$50.00 |
| Mar. 2 | Rose Hughes: Fast-Piece Appliqué | \$40.00 | \$50.00 |

Name: _____

Telephone: _____

Address: _____

Make your check payable to MPQG and send to Dee Davis, 1338 Lincoln Ave, Pacific Grove, CA, 93950. Questions? Email workshops@mpqg.org or call Dee @ 831-372-6454.

Please note: Places are secured in all workshops when payment is received. If you need to cancel, please give at least 7 days notice. No refunds will be made unless replacement can be found.

MPC Quilting

The Monterey Peninsula College Fashion Program will offer a quilting class during the **Spring 2008** session. The class is **Fashion 197.1 Quilting Trends and Techniques** and Master quilter Jeannie Aschenbrenner will present traditional quilting techniques and current timesaving methods to speed up the process of quiltmaking. A variety of patterns and quilt sizes are offered to suit student needs. This is a hands-on course. It is offered **Tuesdays, February 5 through April 29, 2008** 1:10-4:00pm, Room: Family and Consumer Science Building 106
Call 646-4125 for information or see the class schedule on www.mpc.edu.

Challenge Quilt

It is that time of year again. Our Challenge packets for 2008 are now ready and on sale at monthly guild meetings. Our theme is "Women in Hearts." The quilt has to be a total of 120" and you have to use at least 50% of the fabric on the front of the quilt and add any other fabric you like. Look for me next to Block of the Month.

Stella LePine, Challenge Quilt Coordinator

Block of the Month, 2008 - "STARS"

[And you all thought you were rid of me!] Well, here I am again - so far I'm enjoying trying to figure out how to do the Block of the Month so it fits in the newsletter on one page - sometimes a challenge, I think! Ann-Lining Smith, my esteemed predecessor in this role, has already presented the BOM for November, and since we will not do a BOM during our holiday party in December, the next one will be for the January meeting.

It's been suggested that a theme be chosen so that the blocks for each month will blend together nicely - that way, participants will be able to make one to turn in and one to keep toward a collection for a "sampler" quilt top at home.

With that in mind, "STARS" will be the 2008 BOM theme. Each one will be a 12.5 " (unfinished) block, and I will make every attempt to start with simple ones, working toward intermediate blocks. Most will be pieced, but you may find a paper-pieced block among them, too. The Star block to be turned in will have a designated 'colorway' but of course, the Star block you intend to keep you should make out of fabric you just *love!* So that you will have enough of that much-loved fabric, think ahead to how many blocks you want to make to keep - three will make a nice table runner, for instance, or six will make a wall-hanging. Nine would make a table-topper - while 20 would make a great laptop quilt!

If you have any questions or suggestions, please feel free to call me!

Debbie Biller

Friendship Quilt Circles

There are five quilt circles formed to enrich friendships within the guild. Some groups make round-robin quilts, work on current projects, or have challenges. It's fun and a great way to get to know more quilters.

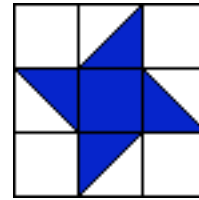
Regina Liske

Tips Toward Precision Sewing

1. If you use a rotary cutter, switch to a new blade immediately if you start noticing threads that don't cut all the way through, or if you have to exert more pressure in order to make the cut cleanly.
2. Do not use the lines on your cutting mat to measure your fabric – there can be too much variation.
3. Remember the lines on the rotary cutting rulers have a width – which should be on the fabric you're about to cut, and so included in the measurement of the piece.
4. Use a ¼ inch seam (no more, no less), making sure the ¼ inch includes the actual line of stitching. (Collins makes a Machine Seam Gauge but they're a little hard to find. They can be ordered online from Hancock's of Paducah for \$4.98, if you can't find one locally but want to try one.)
5. Even a 1/16 inch variation in the seam width can make quite a difference in the size of the finished block – each seam double that figure, and if there are two seams, there's already ¼ inch difference from the desired dimension. The more seams there are in a block, the more the difference can be.
6. Remember that the thread you use takes up space and creates more bulk in your seam – try a 50-weight thread, 2-ply if possible.
7. Use a sharp needle, replacing it when needed. If you hear a 'thunk' as you sew, you probably need a new needle!
8. Keep your machine as dust-free as possible in order to avoid stitching problems.
9. Use a dry, hot iron to press seams on cotton fabric – steam leaves moist fabric behind, which wrinkles more easily as you move your work around, and the moisture also allows the fabric to distort more easily.
10. Press your seams – don't 'iron' the seams by moving the iron all over the fabric.
11. If possible after pressing, allow your fabric to cool before moving it to another location.
12. Where possible, measure the block you're making at each step, instead of finding at the end that you should have corrected your seam allowance in the very beginning.
13. If you're careful as you go, you will not find it necessary to "square up" your block – which can cause un-beautiful cut-off points in the completed project, and very noticeable, uneven symmetry of the block.
14. Practice makes perfect – make one block for the general meeting, and make one out of your favorite fabrics to keep so you can later make a 'sampler star' quilt!

Submitted by Debbie Biller

Block of the Month
January 2008
Friendship Star



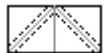
Fabric: The Friendship Star Block requires two different fabrics with good contrast. Let's do blue and white/off-white this month.

- Cut:**
1. One 4-1/2" square of the focus fabric
 2. Four 4-1/2" squares of the background fabric
 3. One 4-7/8" x 9-3/4" rectangle of the focus fabric
 4. One 4-7/8" x 9-3/4" rectangle of the background fabric

Piecing the Block:



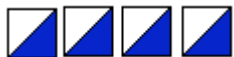
1) Place the two 4 7/8" x 9 3/4" rectangles with right sides together, lightest of the two fabrics on top. Lightly draw a straight line 4 7/8" from the short edge dividing the rectangle in half and forming two squares. Then draw two diagonal lines through the center of the two squares as shown.



2) Still holding the two rectangles together, sew a 1/4" away from the diagonal line on both sides.



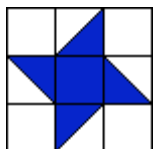
3) Cut the rectangles apart on the drawn lines creating four half square triangle components. Press the seams to the darker fabric. The finished units should measure 4 1/2".



4) Piece two of the half square triangle components with the 4 1/2" focus fabric square as shown to create the center row unit of the Block. Press the seams in toward the center square.



5) Create the upper and lower Block rows by piecing together one of the half square triangle Blocks with two of 4 1/2" background squares as shown. Press the seams out toward the background squares.



6) Piece the three Block rows together as shown to create the finished Block. Press the seams toward the outside edge of the Block. The finished Block should measure 12 1/2" inches square which includes a 1/4" seam allowance on all sides.