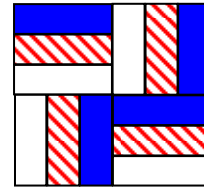


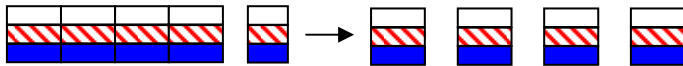
**Rail Fence**  
**Block of the Month**  
**February, 2009**



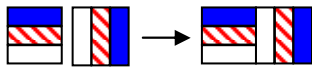
In honor of Abraham Lincoln in his birth month, it seems appropriate to choose this block. (Could we rename it 'Lincoln Logs' for the occasion?) Using the description below, you will make an unfinished 12-1/2" block. As always, use careful 1/4" seams, pressing as you go!



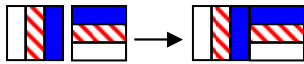
1. Cut 2-1/2" strips at least 27 inches long from red, white and blue fabrics – one of each. Sew them together to make a 6-1/2" x 27" strip. Press all the seams down.



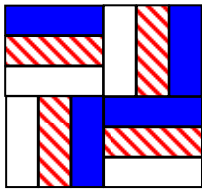
2. Trim the left edge of the constructed strip to straighten it, then cut four pieces 6-1/2" wide, discarding any remaining scraps. Each piece will measure 6-1/2" square.



3. Using two of the 6-1/2" squares, arrange them as shown and sew them together. Press the seam toward the right. The resulting unit will measure 6-1/2" x 12-1/2".

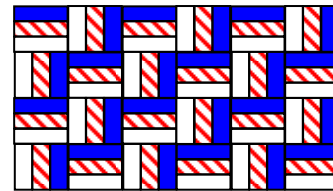


4. Using the remaining two 6-1/2" squares, arrange them as shown and sew them together. Press the seam toward the left. The unit will measure 6-1/2" x 12-1/2".



5. Sew together the two units made in steps 3 and 4 to complete your 12-1/2" (unfinished) Rail Fence block.

You can see that if you put several of these together you will get a design like this:



If you use strips this width & cut the initial squares to be you will have **finished** blocks this size

3"	8"	15"
2-1/2"	6-1/2"	12"
2"	5"	9"
1-1/2"	3-1/2"	6"
1-1/4"	2-3/4"	4-1/2"
1"	2"	3" (that's pretty small!)